

www.u-tron.com



U-Tron (Beijing) Electronics Co. Ltd.

2012



Preface

U-Tron (Beijing) Electronics Co. Ltd., was established in 1992 as a WOFE in Beijing, China. 100% of the funding for the company was invested and started by American Companies.

In 1997 we introduced the first LED Traffic Signals. Following that success in 2006 we have moved into the research and development and manufacturing of High Power LED products for ITS and other applications.

In the early of 2008, we successfully developed the first series of LED street lighting products. At present U-Tron has introduced more than 100 products and owned more then 10 patents.

China is a big electronics manufacturing country, the domestic LED industry has broad prospects for development. The next five years, China will also take solid-state lighting as a major project to promote energy savings. It is estimated that by 2012 the entire Chinese LED industry output will be more than 150 billion.



Special Features of U-Tron LEDs

- Market all products under the U-Tron Trade mark
- Thrive to maintain Maximum light output by working with the industry leaders.
- Always use the best High-efficiency heat transfer technology.
- Give customers the Best way to save energy.
- Ensure a large area of illumination Coverage.
- Elegant Design.
- Bring out the best Color rendering and Cover the full range of Color Temperatures.
- Absolutely; No-thermal radiation; No-hazardous Metals and Environmentally-Friendly.
- Light weight.
- Long life; Good stability and reliability. Give our customers 3 to 5 Year Warranty.
- Class A customer service.
- Low maintenance costs.

Introduction R & D products

At present U-Tron has introduced nearly 100 products.
We are setting new standards for the future of
LED Luminaries

- UFO recessed light
- Moon light
- Plant Growing light
- T8 tube
- Intelligent Watt Meter
- Lucas LED Street Lights
- BatLEDs the Tunnel Lights
- SoLEDs for Solar Powered Lights
- E40 Retrofit LED Bulb LED
- Helios and Helios Jr LED Bulbs
- UFO E40 LED Lights



Introduction R & D products

At present U-Tron has introduced nearly 100 products.

We are setting new standards for the future of
LED Luminaries

- Venus LED Light
- Milky-way LED Light
- Factory Hanging LED Light
- Comet LED Light
- Ranger Emergency LED Lights
- Ranger Emergency LED Lights with Solar
- Light Control and Management System



LED Moon Light™

Technical Specifications:

- Thinnest in the world: only 14mm
- Using Patented technology of Al-Cu-Ceramic PCB to achieve best heat management
- Number of LEDs: 100 Cree High power
- Total Power Consumption: 12 watts
- LED Type: Cree
- Power Rating: Universal
- Temperature rating: -40 °C to 45 °C
- LED Initial Flux: 2,000 lm
- Light Dimensions: Φ 182mm, Φ 150mm
 Φ 1125mm

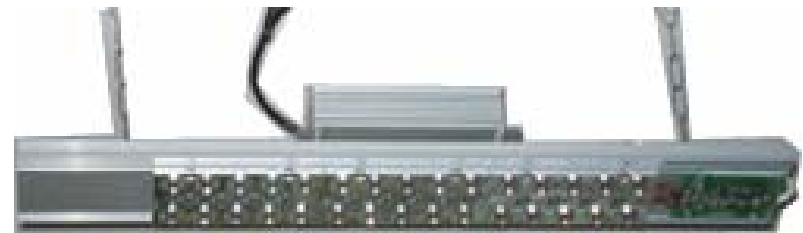




Plant Growing Light™

Technical Specifications:

- Number of LED: 36 to 84
- Total Power Consumption:
48 -100 watts
- LED Type: Cree R5
- Power Rating: Universal
- Temperature rating: -40 °C to 45 °C
- LED Initial Flux: 5,004 to 11,000 Lm
- Light Dimensions: 500 to 1200 x 91
x 60mm



600 mm **T8** Tube Light

Technical Specifications:

- Number of LEDs: 80
- Total Power Consumption: 11 watts
- LED Type: Cree CLA1B
- Power Rating: Universal
- Temperature rating: -40 °C to 45 °C
- LED Initial Flux: 900 lm
- Light Dimensions: 600mm



1200mm **T8** Tube Light

Technical Specifications:

- Number of LEDs: 160
- Total Power Consumption: 21 watts
- LED Type: Cree CLA1B
- Power Rating: Universal
- Temperature rating: -40 °C to 45 °C
- LED Initial Flux: 1800 lm
- Light Dimensions: 1200mm



Intelligent Watt Meter™



■ *Technical Specifications:*

- Ordering Part No: U-6860-100
- Input Voltage: Universal AC
- Input Frequency: 48-65 Hz
- Maximum Power: 2000 watts
- Dimension: 215x150x92mm
- Net Weight 0.65 Kg

Lucas LED™ Street Lights

L I 30 Technical Specifications:

- Number of LED: 30
- Total Power Consumption: 40 watts
- LED Type: Cree R5
- Power Rating: Universal
- Temperature rating: -40 °C to 45 °C
- LED Initial Flux: 4,170 lm
- IP Rating: IP 65
- Light Dimensions:
560x333x100.50mm



Lucas LED™ Street Lights

L I 42 Technical Specifications:

- Number of LED: 42
- Total Power Consumption: 55 watts
- LED Type: Cree R5
- Power Rating: Universal
- Temperature rating: -40 °C to 45 °C
- LED Initial Flux: 5,838lm
- IP Rating: IP 65
- Light Dimensions:
560x333x100.50mm

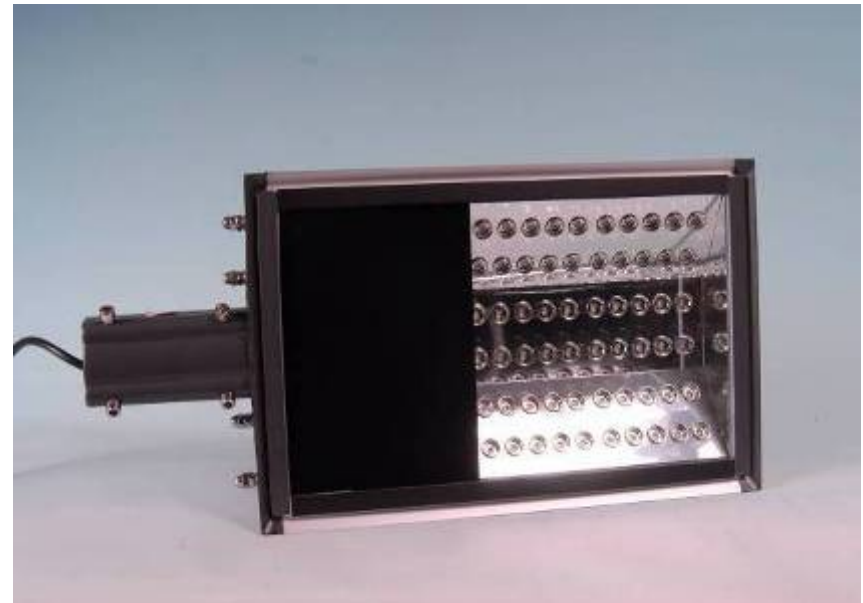


Lucas LED™ Street Lights

L II 60

Technical Specifications:

- Number of LEDs:60
- Total Power Consumption: 80 watts
- LED Type: Cree R5
- Power Rating: Universal
- Temperature rating:-40 °C to 45 °C
- LED Initial Flux: 8,340 lm
- IP Rating: IP 65
- Lights Dimensions: 689x333x100.50mm



Lucas LED™ Street Lights

L II 84 Technical Specifications:

- Number of LED: 84
- Total Power Consumption: 105 watts
- LED Type: Cree R5
- Power Rating: Universal
- Power Supply Consumption: 10.5W
- Temperature rating: -40 °C to 45 °C
- LED Initial Flux: 11760lm
- IP Rating: IP 65
- Lights Dimensions: 689x333x100.50mm



Lucas LED™ Street Lights

L III 90 Technical Specifications:

- Number of LED: 90
- LED Type: Cree R5
- Total Power Consumption: 115 Watts
- Power Rating: Universal
- Temperature rating: -40 °C to 45 °C
- LED Initial Flux: 12,510 lm
- IP Rating: IP 65
- Lights Dimensions:
686mmx333mmx198mm



Lucas LED™ Street Lights

L III 114

Technical Specifications:

- Number of LED: 114
- LED Type: Cree R5
- Total Power Consumption: 135 Watts
- Power Rating: Universal
- Temperature rating: -40 °C to 45 °C
- LED Initial Flux: 15,846 lm
- IP Rating: IP 65
- Light Dimensions: 689x333x100.50mm



Lucas Flat Panel LED™ Street Lights

LFP II 60

Technical Specifications:

- Number of LED: 60
- LED Type: Cree R5
- Total Power Consumption: 80 Watts
- Power Rating: Universal
- Temperature rating: -40 °C to 45 °C
- LED Initial Flux: 8,340 lm
- IP Rating: IP 65
- Light Dimensions: 560x333x100.50mm



Lucas Flat Panel LED Street Lights

LFP II 84

Technical Specifications:

- Number of LED: 84
- LED Type: Cree R5
- Total Power Consumption: 105 Watts
- Power Rating: 220VAC 50/60Hz
- Temperature rating: -40 °C to 45 °C
- LED Initial Flux: 8,340 lm
- IP Rating: IP 65
- Light Dimensions: 560x333x100.50mm



Lucas LED™ Street Lights

Twin Head Technical specifications:

- Number of LED: 120
- LED Type: Cree R5
- Total Power Consumption: 220 Watts
- Power Rating: Universal
- Temperature rating: -40 °C to 45 °C
- LED Initial Flux: 16,680 lm
- IP Rating: IP 65
- Light Dimensions: 849x700x100.50mm



Lucas LED™ Street Lights

Twin Head Technical specifications:

- Number of LED: 180
- LED Type: Cree R5
- Total Power Consumption: 220 Watts
- Power Rating: Universal
- Temperature rating: -40 °C to 45 °C
- LED Initial Flux: 25,020 lm
- IP Rating: IP 65
- Light Dimensions: 981x700x100.50mm



BatLEDs™ Lights

BI 30 Technical Specifications:

- Number of LEDs:30
- Total Power Consumption:40 watts
- LED Type: Cree R5
- Power Rating: Universal
- Temperature rating: -40 °C to 45 °C
- LED Initial Flux:4,170 lm
- IP Rating: IP 65
- Light Dimensions: 284x333x200.50mm



BatLEDs™ Lights

BI 42 Technical Specifications:

- Number of LED: 42
- Total Power Consumption: 55 watts
- LED Type: Cree R5
- Power Rating: Universal
- Temperature rating: -40 °C to 45 °C)
- LED Initial Flux: 5838 lm
- IP Rating: IP 65
- Light Dimensions: 84x333x200.50mm



BatLEDs™ Lights

BII 60 Technical Specifications:

- Number of LED: 60
- Total Power Consumption: 80 watts
- LED Type: Cree R5
- Power Rating: Universal
- Temperature rating: -40 °C to 45 °C
- LED Initial Flux: 8,340 lm
- IP Rating: IP 65
- Lights Dimensions: 402x333x200.50mm



BatLEDs™ Lights

BII 84 Technical Specifications:

- Number of LED: 84
- Total Power Consumption: 110 watts
- LED Type: Cree R5
- Power Rating: Universal
- Power Supply Consumption: 10.5W
- Temperature rating: -40 °C to 45 °C
- LED Initial Flux: 11,676lm
- Lights Dimensions: 402x333x200.50mm



SoLEDs™ Solar Lights

WWW.SOLEDS.COM

SI 30 Technical Specifications:

- Number of LED: 30 Pieces Cree R5 LED
- Lumens: 4,170lm
- At 4 meters > 55.75lx (average)
- Operating voltage: 10 to 30 Volt DC
- Solar panel: 1382 x 1050 mm (2-130Watts Solar panels-designed for Sweden)
- Battery: Two 60 AH 12 V Automobile batteries connected in serial mode to give 24 V output.
- Duration of operation: Not less than 10 Hours for 3 consecutive nights when fully charged.
- Controller functions
- Light control, over charge protection, over discharge protection, and dimming after xx hours of operation.



SoLEDs™ Solar Lights

WWW.SOLEDS.COM

SI 42 Technical Specifications:

- Number of LED: 42 Pieces Cree R5 LED
- Lumens: 5,838 lm
- At 4 meters >78.05lx (average)
- At 5 meters >49.95lx (average)
- At 6 meters >34.69lx (average)
- At 7 Meters >25.48lx (average)
- Operating voltage: 10 to 30 Volt DC
- Solar panel: 1470 x 680 mm (4-85Watts Solar panels – designed for Sweden)
- Battery: Two 60 AH 12 V Automobile batteries connected in serial mode to give 24 V output.
- Duration of operation: Not less than 10 Hours for 3 consecutive nights when fully charged.
- Controller functions
- Light control, over charge protection, over discharge protection, and dimming after xx hours of operation.



SoLEDs™ Solar Lights

WWW.SOLEDS.COM

SII 60 Technical Specifications:

- **Number of LED: 60 Pieces Cree R5**
- **LED Lumens: 8,340lm**
- **At 4 meters > 111.5 lx (average)**
- **At 9 Meters > 22.0 lx (average)**
- **Operating voltage: 10 to 30 Volt DC**
- **Solar panel: 1100 x 500 mm 4 panels**
- **Battery: Four 60 AH 12 V**
Automobile batteries connected in serial
mode to give 24 V output.
- **Duration of operation Not less than 10**
Hours for 3 consecutive nights when fully
charged.
- **Controller functions Light control, over**
charge protection, over discharge protection,
and dimming after xx hours of operation.

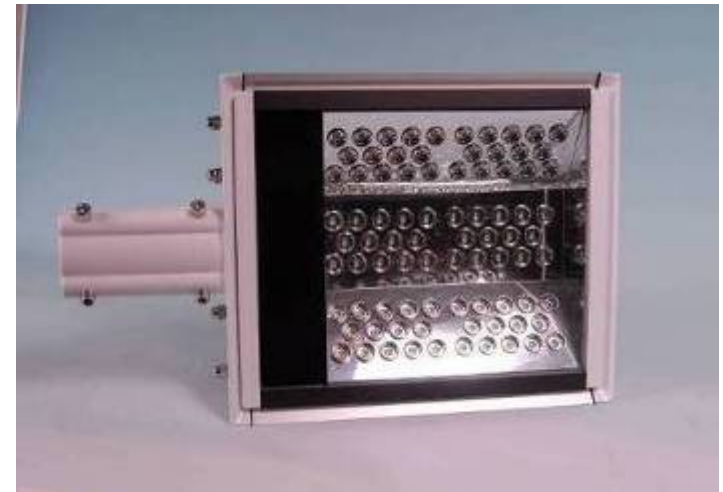


SoLEDs™ Solar Lights

WWW.SOLEDS.COM

SII 84 Technical Specifications

- Number of LED: 84 Pieces Cree R5
- LED Lumens: 11,676 lm
- At 4 meters > 156.10 lx (average)
- At 9 Meters > 30.83 lx (average)
- At 10 Meters > 24.98 lx (average)
- Operating voltage 10 to 30 Volt DC
- Solar panel 1100 x 500 mm 4 panels
- Battery: Four 60 AH 12 V Automobile batteries connected in serial mode to give 24 V output.
- Duration of operation: Not less than 10 Hours for 3 consecutive nights when fully charged.
- Controller functions: Light control, over charge protection, over discharge protection, and dimming after xx hours of operation.



VENUS™ Light LED

Venus 10 Technical Specifications:

- Number of LED: 10
- Total Power Consumption: 13 watts
- LED Type: Cree R5
- Power Rating: **Universal**
- Temperature rating: -40 °C to 45 °C
- LED Initial Flux: 1,400 lm
- Beam Angle: 30 Degrees
- IP Rating: IP 65
- Lights Dimensions: 195x235x312mm



VENUS™ Light LED

Venus 14 Technical Specifications:

- Number of LED: 14
- Total Power Consumption: 20 watts
- LED Type: Cree R5
- Power Rating: **Universal**
- Temperature rating: -40 °C to 45 °C
- LED Initial Flux: 2,000 lm
- Beam Angle: 30 Degrees
- IP Rating: IP 65
- Lights Dimensions: 195x235x312mm



VENUS™ Light LED

Venus 30 Technical Specifications:

- Number of LED: 30
- Total Power Consumption: 40 watts
- LED Type: Cree R5
- Power Rating: **Universal**
- Temperature rating: -40 °C to 45 °C
- LED Initial Flux: 4,170 lm
- Beam Angle: 30 Degrees
- IP Rating: IP 65
- Lights Dimensions: 195x235x312mm



VENUS™ Light LED

Venus 42 Technical Specifications:

- Number of LED: 42
- Total Power Consumption: 55 watts
- LED Type: Cree R5
- Power Rating: **Universal**
- Temperature rating: -40 °C to 45 °C
- LED Initial Flux: 5,838 lm
- Beam Angle: 30 Degrees
- IP Rating: IP 65
- Lights Dimensions: 195x235x312mm



E40 Retrofit LED Bulb

Lucas E40 Technical Specifications:

- E40 type socket
- Number of LEDs is only 10
- Maximum power consumption: 15 Watts - includes LEDs, Drivers and Power Supply.
- (DC version available upon request)
- Maximum light output: >1000 Lux
- Cool White (5000~7000K) or
- Warm White (3000- 4000K)
- Coverage: 90° cone shape. Perfectly distributed light beam
- Life cycle: 50,000 hours
- Operating Temperature-30° C ~ 40° C
- Input Power 85 - 265VAC (universal)
- Lamp housing material: Aluminum Alloy, PC
- Recommended Heights: 4, 5 or 6Meters
- Measured Illumination (E) (Height=4.5m) ->13 lux
- Effective Illuminated Area Height is equal to the radius of the coverage area
- IP Rating is: IP 58
- Approvals: comply with all RoHS requirements. CE and UL pending



E40 Retrofit LED Bulb LED P1

Characteristics of our E40

- We use CREE® LED chips for highest light output and reliability.
- Very low total power consumption: Only 15 Watts!
- High Lumen output: >1000 Lumens.
- Internal current is only 330mA.
- Evenly distributed Circular Light Beam. Using our patented reflector cups we have achieved the most economical way to control light.



E40 Retrofit LED Bulb LED P2

Characteristics of our E40

- Fits All Standard E40 Sockets, A Direct Retrofit Replacement:
- Easy assembly and Disassembly mechanism.
- Changing Power Supply made easy, you don't need complicated tools to open the case and swapping a new power supply. .
- Smart Heat sink holds it all together using 2 long screws and maintain highly efficient thermal management



E40 Retrofit LED Bulb LED P3

Characteristics of our E40

- Less visual fatigue when used with glossy shade.
- No need for "Very Hot" warnings
- No more cleaning.
- Global Power input: Use it in any country. 80VAC to 260VAC.
- Line frequency: 45Hz to 65 Hz
- No Ultraviolet (UV) or Infrared (IR) Radiation
- Shock-resistant: No moving parts or delicate filaments or breakable glass.
High precision Driver Board.
- Energy saved over 6 months will pay for lamp it self.
- Long lasting: guaranteed to provide over 70% of its original luminance for 50,000 hrs.



LED Helios™ Dimmable Light Bulb

Helios Dimmable Technical Specifications:

- Number of LED: 3
- Total Power Consumption: 3.8 watts
- LED Type: Cree R5
- Power Rating: Universal
- Temperature rating: -40 °C to 45 °C
- LED Initial Flux: 420 lm
- IP Rating: IP 65
- Lights Dimensions: 59x122.5mm



LED Helios Junior™ Light Bulb

Helios Junior

Technical Specifications:

- Number of LED: 3
- Total Power Consumption: 3.8 watts
- LED Type: Cree R5
- Power Rating: Universal
- Temperature rating: -40 °C to 45 °C
- LED Initial Flux: 420 lm
- IP Rating: IP 65
- Lights Dimensions: 59x122.5mm



E27



B22



GU10



E14

LED Helios™ Light Bulb For Home and Office

Total Power Consumption: Less than 4 watts

LED: (Cree R5) 3

Input AC Voltage: Universal

Brightness: 420 lumen

Frequency: 45-65Hz

Equivalent incandescent light bulb 40W

Weight: 135g

Dimensions: 56mm diameter and 106mm long

Color Temperature In Kelvin CW= 5500 Kelvin –

Daylight White WW= 3000 Kelvin – Yellow/White

Beam Width: 180 degrees

Warranty: 3 years from date of purchase

Approved Certification: CQC, CE and Pending UL

Approval.



**Cool White = 5500 Kelvin or
Daylight White = 3000 Kelvin**



Comet LED™ Light MR16

Comet Technical Specifications:

- Number of LED: 3
- Total Power Consumption: 3W
- LED Type: Cree R5
- Power Rating: Universal
- Temperature rating: -40 °C to 45 °C
- LED Initial Flux: 420lm
- Light Dimension: 50 x Ø50mm



UFO Factory LED Light

UFO Factory Light Technical Specifications:

- Number of LED: 36
- Total Power Consumption: 50W
- LED Type: Cree R5
- Power Rating: Universal
- Temperature rating: -40 °C to 45 °C
- LED Initial Flux: 5,004lm
- Light Dimension: 362 x Ø 380mm



UFO Recessed™ Lights

Technical Specifications:

- Number of LED: 12, 28, 36
- Total Power Consumption: 15W, 42W, 50W
- LED Type: Cree R5
- Power Rating: Universal
- Temperature rating: -40 °C to 45 °C
- LED Initial Flux: 4,000 lm
- Light Dimensions: 191xΦ 229mm



UFO E40 LED LIGHT

Technical Specifications:

- Number of LED: 1
- LED Type: Citizen LED (CL-L233-MC13L1)
- Total Power Consumption: 13 Watts
- Color Rendering Index: 85
- Power Rating: 220V 50Hz
- Temperature rating: 25 °C
- Maximum Operating Temperature 50 °C
- LED Initial Flux: 900 lm
- IP Rating: 25
- Weight: 750 g
- Lights Dimensions: 159.5mm L x 120mm D
- Warranty on Workmanship: 36 Months
- Guarantee on LED: < 50% loss (Which ever comes first)
60 Months or 50,000 Hrs



Panel LED light

Milkyway LED Panel™ Lights

www.ledmilkyway.com

Milky Way Technical Specifications:

- Number of LED: 112 per side
- Total Power Consumption: 15, 30 and 60W
- LED Type: Cree
- Power Rating: Universal
- Temperature rating: -40 °C to 45 °C
- LED Initial Flux: 1700, 3200 and 4800lm
- Lights Dimensions:
 - 600x600mm,
 - 1200x300mm
 - 300x300mm
 - and 600x300mm





U-Tron 6800-LCM-R1 Light Control and Management System

■ **6800-LCM-R1 Features:**

- Works with all Lucas, BatLEDs, SoLEDs models Programmable Light intensity reduction control.
- Outputs PWM, 1-10V or Coded signal over the power line.
- The system will not respond to line fluctuation
- Single or Three phase line control
- Compact design, fits in many existing Power Distribution Cabinets.
- Remote Access using CDMA phones or Internet terminals.
- Monitoring capabilities and warning message when lights don't work.
- 12KB Storage capacity for register 365 days event
- Power fails recorder can keep track of brown outs and black outs
- Calculators to show energy consumption over selected time periods.
- 10 Amps to 40 Amps
- 16 to 512 channels



Successful Projects

Project Name:

Gothenburg, Sweden 2008

- **Address:** Jacobson between 12th and 13th Street
- **Number of Installed Lights:** 24 lights
- **Products Types:** 20 Lucas II 84 and 4 Lucas I 42
- **Height of Poles :** 12 Meter
- **Distance between poles:** 25 Meters
- **Installation Date:** December 2008
- **Contact:** Lasso Stevenson



Successful Projects

Project Name

Tianjin People's Stadium Solar Lights

- **Address:** Tianjin People's Stadium
- **Number of Installed Lights:** 5 lights
- **Product Type:** E40 Retrofit LED Bulb LED
- **Height of Poles:** 3.5 Meter
- **Installation Date:** July 2009
- **Contact:** Mr Ni



Successful Projects

BatLEDs Light in Nanjing Subway

In March 2009, representatives from the China Railway Construction Group No. 3 Company and U-Tron Beijing met to oversee the initial installation of U-Tron BatLED lights on Nanjing's Subway Line 2.

A team from U-Tron is installing BatLED 40W lamps in 13 kilometers of the subway tunnel. The BatLEDs are replacing conventional 120W fluorescent lamps and are spaced at 10 meter intervals along the tunnel.

Mr. Yang, the vice director of the China Railway Construction Group No. 3 Company and Mr. Chen, the project manager met with U-Tron managing director, Raja Magasweran, and his team, project manager Mr. Li, contractor Mr. He, and U-Tron's Nanjing representatives, Ms. Lin and Mr. Peng.

Technical staff from No.3 company had previously evaluated U-Tron BatLED lamps and recommended that they be installed in place of conventional fluorescent lamps because the BatLEDs gave better coverage than traditional lamps as well as offering the advantages of lower power consumption and reduced maintenance costs.



Successful Projects

Project Name:

**Family Compound of Tianjin
Lighting Bureau Light Sample**

- **Address:** Family Compound of
- **Tianjin Lighting Bureau**
- **Number of Installed Lights:** 1 light
- **Type of light:** Lucas II 84
- **Height of Poles:** 12 Meters
- **Installation Date:** February 2009
- **Contact:** Mr Jian, Chen Chen



Successful Projects

**Project Name:
Installation for Daxing
Development Zone**

- **Address: Beijing Daxing**
- **Development Zone**
- **Number of Installed Lights: 53 lights**
- **Type of light: Lucas I 30**
- **Height of Poles: 12 Meters**
- **Installation Date: August 2009**
- **Contact: David Wen, Mr Wang**



Successful Projects

Project Name:
Installation for Tongzhou
Development Zone

- **Address: Beijing Tongzhou**
- **Development Zone**
- **Number of Installed Lights: 53**
lights
- **Type of light: Lucas I 30**
- **Height of Poles: 12 Meters**
- **Installation Date:**



Successful Projects

**Project Name:
Installation for WAB
International School**

- **Address: Beijing Jingxi school
Development Zone**
- **Number of Installed Lights: 53
lights**
- **Type of light: BatLED II 84**
- **Installation Date: Sept 2011**



Successful Projects

Project Name:
Installation for
Yizhuangu Development
Zone

- **Address: Beijing Yizhuang Development Zone**
- **Type of light: Lucas III 90**
- **Installation Date: October 2009**



Successful Projects

Project Name:
Installation for Nanshan District, Shenzhen pilot

- **Address: Nanshan District, Shenzhen pilot Zone**
- **Type of light: Lucas II84**
- **Installation Date: January 2010**



Successful Projects

Project Name:
**Installation for Yizhuang
small poplar project**

- **Address: Beijing Yizhuang**
- **Development Zone**
- **Type of light: Lucas III 90**
- **Installation Date: August 2009**



Successful Projects

Project Name:
Installation for Yizhuang
Town Government

- **Address:** Beijing Yizhuang
- **Development Zone**
- **Type of light:** Helios 3
- **Installation Date:** May 2010



Successful Projects

Project Name:
Installation for Hongta
Group employees
Building

- **Address: Hongta Group employees Building**
 - **Type of light: Lucas I 42**
 - **Installation**
- Date: November 2009**



Successful Projects

Project Name:
Installation for Yunnan
Yuxi Coral project

- **Address:** Coral Road, Yuxi,
Yunnan **Type of light:** Lucas
I 42
- **Installation Date:** November
2009



Successful Projects

**Project Name:
Installation for
Zhongguancun Science**

- **Address: Zhongguancun Science**
- **Type of light: Lucas II 90**
- **Installation Date: July 2009**



Successful Projects

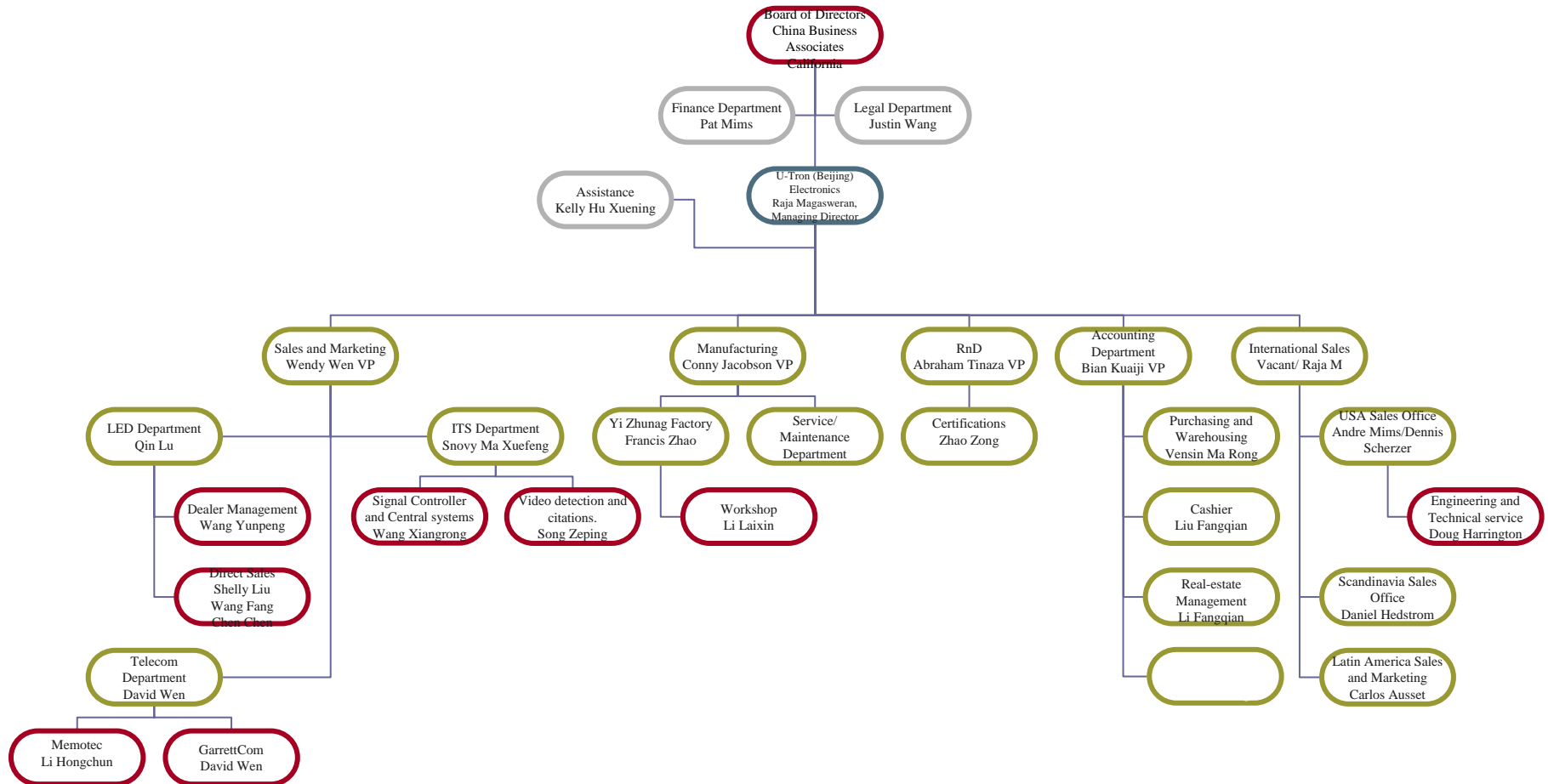
**Project Name:
Installation for South
GuiYuan community**

- **Address: South GuiYuan community**
- **Type of light: Lucas I 42**
- **Installation Date: August 2009**





Organization Chart





U-Tron (Beijing) Electronics Co. Ltd.

U-Tron (Beijing) Electronics Co. Ltd. Company Information

Company Name : U-Tron (Beijing) Electronics Co. Ltd.

Company Address : 10 Langjiayuan, Beijing, China 100022

Registered : July 16, 1992

**Approval of Unit : Beijing Administration For Industry and
Commerce**

Type of Company Registration : Wholly Foreign-owned



U-Tron (Beijing) Electronics Co. Ltd.

Qualification

企业法人营业执照
(副本)
注册号: 110108410022492

名称: 优创(北京)电子有限公司
住所: 北京市朝阳区建外郎家园10号
法定代表人: 曹晖·马格斯雅格
注册资本: 美元50万元
实收资本: 美元50万元
企业类型: 有限责任公司(外国法人独资)
经营范围: 生产计算机通讯适配器、配套部件及相关售后服务; 销售自产产品。

股东(发起人): 美国中国基金投资有限公司

营业期限: 1992年07月16日至2017年07月15日
成立日期: 1992年07月16日

登记机关: 北京市工商行政管理局

中华人民共和国外商投资企业批准证书
CERTIFICATE OF APPROVAL
FOR ESTABLISHMENT OF ENTERPRISES WITH FOREIGN INVESTMENT IN THE PEOPLE'S REPUBLIC OF CHINA

批准文号: 110108410022492

企业名称: 优创(北京)电子有限公司
企业性质: 有限责任公司
注册地址: 北京市朝阳区建外郎家园10号
经营范围: 生产计算机通讯适配器、配套部件及相关售后服务; 销售自产产品。

批准日期: 2006年11月17日

税务登记证
(副本)
税登证号: 110108410022492

纳税人名称: 优创(北京)电子有限公司
法定代表人(负责人): 曹晖·马格斯雅格
地址: 北京市朝阳区建外郎家园10号
登记注册类型: 有限责任公司
经营范围: 生产计算机通讯适配器、配套部件及相关售后服务; 销售自产产品。
主管税务机关: 北京市朝阳区税务局

总机构情况
(有分支机构者)

名称	地址	经营范围
优创(北京)电子有限公司	北京市朝阳区建外郎家园10号	生产计算机通讯适配器、配套部件及相关售后服务; 销售自产产品。

分支机构设置
(有分支机构者)

名称	地址	经营范围
优创(北京)电子有限公司	北京市朝阳区建外郎家园10号	生产计算机通讯适配器、配套部件及相关售后服务; 销售自产产品。

中华人民共和国组织机构代码证
(副本)
代码: 60002130-7

机构名称: 优创(北京)电子有限公司
机构类型: 法人企业
地址: 北京市朝阳区建外郎家园10号
有效期: 2006年11月17日至2016年11月15日
发证机关: 北京市质量技术监督局
证书编号: 110000-11220-1

中华人民共和国国家质量监督检验检疫总局公告
公告内容: 优创(北京)电子有限公司生产的计算机通讯适配器、配套部件及相关售后服务, 符合国家标准, 准予注册。

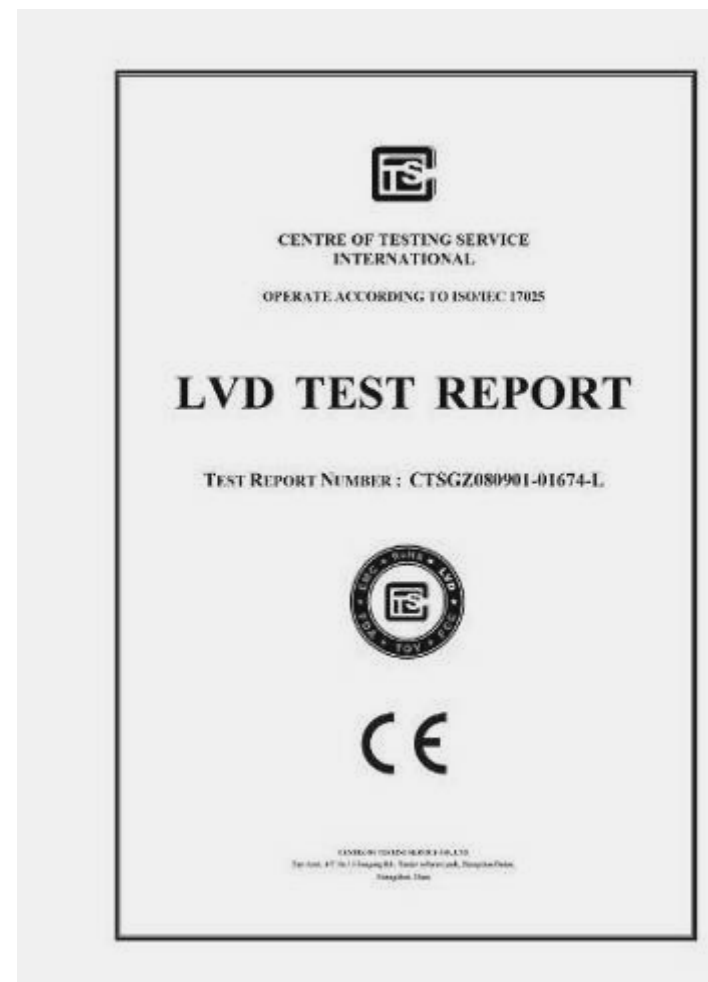
公告编号: 110108410022492



U-Tron (Beijing) Electronics Co. Ltd.

U-Tron (Beijing) Electronics Co. Ltd. Patent







Chronicle of Events

- 1992 The U-Tron (Beijing) Electronics Co., Ltd is established as a wholly foreign owned enterprise of China Business Associates.
- 1992 The U -Tron researched and developed successfully PCBX (Personal Computer Branch Exchange) personal computer telephone switching system and it becomes the first product that combines computer and telecommunication and to be manufactured and marketed for commercial applications.
- 1993 China Telecom issues U-Tron PCBX a license to be permitted into the China Telecom Network.
- 1993 U-Tron becomes first in the world to manufacture a complete set of the PCDY system, which allows meetings and conversations to take place over the telephone, commonly known as "phone meetings." Made of the most advanced technology at the time, the system allows up to 60 individuals to join the "phone meeting." Aside from being able to conduct meetings over the phone, this system can store up to 256 messages.
- 1994 The first generation of U-Tron PCHY is manufactured. From factories to mines, this advanced technology system can be utilized in various work environments and provides various functions, such as monitoring and assigning work.
- 1995 U-Tron pioneers into importing the first generation of LCD over-head projectors in China. The American company Proxima also awards U-Tron a certificate for selling one million overhead projectors to the Chinese market.
- 1996 U-Tron imports the first generation of digital projectors to China. Ever since U-Tron's introduction of the digital projector to the Chinese market, there has been great demand from Chinese consumers for this product.



Chronicle of Events

- 1997 U-Tron is the first company in China to produce and manufacture the hands-free headset, which has both an earpiece and a microphone in one device.
- 1997 U-Tron becomes an exclusive authorized dealer to supply the reconstruction system and maintenance services on the LANETCO two-chip SVGA DLP rear projection system for the Command and Control Center of the Beijing Traffic Bureau.
- 1998 U-Tron assists the Agricultural Bank of Zi Bo in Shan Dong Province with connecting to the Internet network system.
- 1999 U-Tron expands into the field of CTI, a telephone multi-function system. U-Tron successfully implements the Call Center system. Examples which illustrate the Call Center system's effectiveness can be found at Han Dan in Hei Bei Province at Cheng Jian Company's Customer Service Center and at Beijing's Qing Hua Tong Fang Computer Service Center.
- 1999 U-Tron creates its own Chinese language-based web page.
- 2000 U-Tron completes the development of the Beijing Police System software of 110/119/122. This system is successfully implemented in Shangdong, WeiFang, Heilongjiang Province Auto, and Shanxi Province JinCheng Police. As a result, the quality of the Emergency Response System drastically improves.



Chronicle of Events

- 2001 The U-Tron Fax Server System is introduced to the Chinese market. At the same time, the China CTI.com website is also developed.
- 2001 The development of the U-Tron CALOG1000 conversation recording server with multiple communication capability is finished. Customers include Shijiazhuang Police Command Center, Tianjin Telecommunications Bureau, and the Beijing Underground Railway Construction Company.
- 2001 The British Columbia Urban Transportation Control Research Institute signs an agreement to develop an ITS program for Beijing and Shanghai. A series of U-Tron ITS products and applications are introduced.
- 2003 U-Tron wins the first ITS purchase contract for supplying Beijing with 800 MHz microwave receivers and transmitters for the city's Police and Traffic Bureau.
- 2003 U-Tron jointly develops the China National Fuzzy Data Research Center, the first electronic police surveillance system: "U-Tron 6000."
- 2003 The police photo citation and surveillance system "U-Tron 6000" are installed in the cities of Han Dan, Dezhou, and Tianjin.
- 2004 U-Tron re-developed sets of Traffic Lights using LEDs to meet the Chinese new standards, and won the approval from Wuxi Institute of Traffic Engineering.
- 2006 U-Tron re-developed Cree high-power LED street lamp series. The first patent application.
- 2008 U-Tron re-developed more than 10 series LED street lamp, they are including Lucas Street Light, Batleds lights, Solarled Lights. Our successful Project in Sweden are our Lucas Street lights.

www.u-tron.com



Contact Us

- **Address: 10 Langjiayuan, East 5th Floor, Beijing, China 100022**
- **Contact : Wendy Wen**
- **TEL: +86-10-6568-2990**
- **Cell: +86 1370-120-2197**
- **Price Book Please download at**
 - **www.u-tron.com/en/downloads**